



Beaufort County Public Works
Stormwater Infrastructure
Project Summary

Project Summary: Jasmine Hall Road

Activity: Routine/Preventive Maintenance

Duration: 07/24/18-08/20/18

Narrative Description of Project:

Project improved 3,996 L.F. of drainage system. Cleaned out 3,996 L.F. of roadside ditch. Jetted (1) crossline pipe.

2019-504 / Jasmine Hall Road	Labor Hours	Labor Cost	Equipment Cost	Material Cost	Contractor Cost	Indirect Labor	Total Cost
AUDIT / Audit Project	1.0	\$21.79	\$0.00	\$0.00	\$0.00	\$0.00	\$21.79
CLPJT / Crossline Pipe - Jetted	4.0	\$89.12	\$76.64	\$13.74	\$0.00	\$57.36	\$236.86
HAUL / Hauling	55.0	\$1,089.18	\$778.80	\$215.26	\$0.00	\$119.46	\$2,202.70
HEQ / Haul equipment	2.0	\$49.40	\$28.32	\$18.32	\$0.00	\$32.94	\$128.98
RSDCL / Roadside Ditch - Cleanout	173.0	\$3,809.18	\$899.86	\$217.31	\$0.00	\$2,436.87	\$7,363.22
UTLOC / Utility locates	0.5	\$12.35	\$0.00	\$0.00	\$0.00	\$6.62	\$18.97
2019-504 / Jasmine Hall Road Sub Total	233.5	\$5,021.62	\$1,755.30	\$446.31	\$0.00	\$2,620.30	\$9,843.54
Grand Total	233.5	\$5,021.62	\$1,755.30	\$446.31	\$0.00	\$2,620.30	\$9,843.54

Before

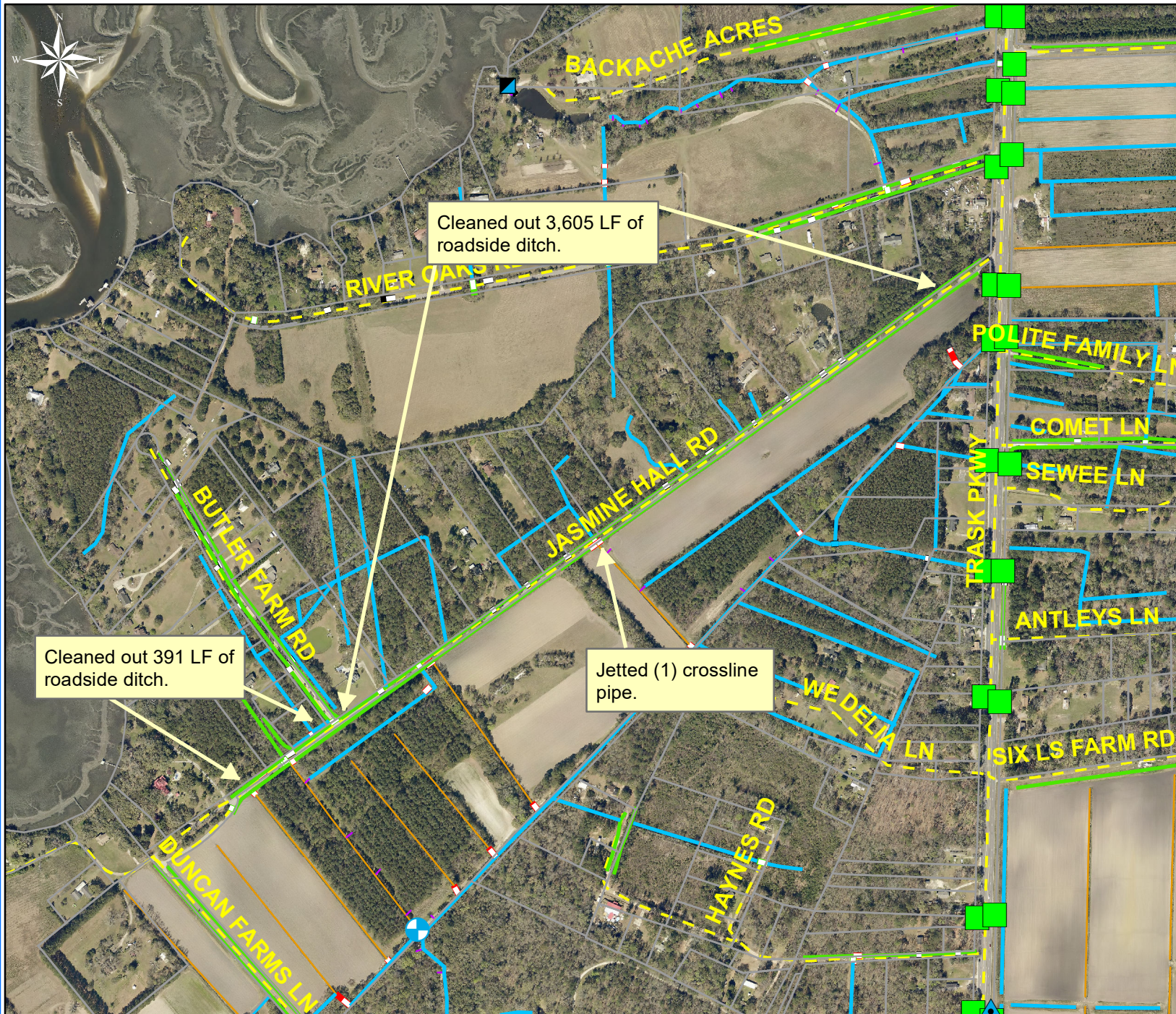


During



After





Project: Jasmine Hall Road

Activity: Routine/ Preventive Maintenance

Project #: 2019-504

Township/SW Dist: Sheldon/5

Completed: August 2018

Legend

Drainage Type

- Access Pipe
- Bleeder Pipe
- Channel Pipe
- Channel
- Stream
- Crossline Pipe
- Driveway Pipe
- Lateral
- Lateral Pipe
- River
- Road Pipe
- Roadside
- Roadside Pipe

0 160320 640 960 1,280
Feet

1 inch = 670 feet

Prepared By: BC Stormwater Management Utility

Date Print: 12/20/18

File: C:\project summaries map\Jasmine Hall Road_2019-504